

Procedure for Making Tray



Two parts in making a custom tray

- Prepare a proper model
- Fabricate a tray

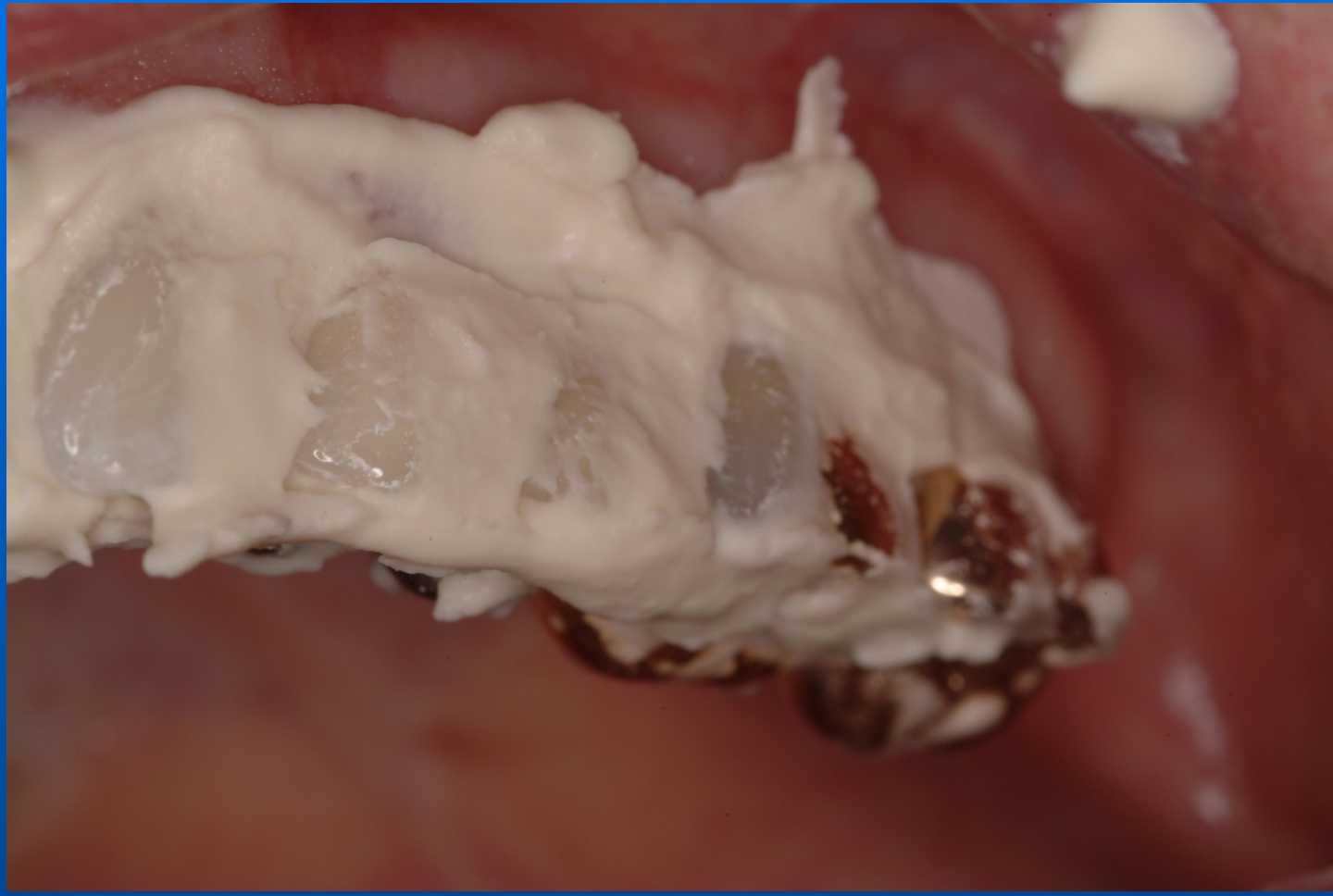
Prepare a proper model

- Place adhesive and/or holes in tray, rimlock
- Place alginate on occlusal & buccal
- Wet impression after removal from mouth
- Mix stone under vacuum
- Tease stone into cast
- Trim model to 5 mm from cervical area
- Fill in holes with block out resin
- Remove excess bubbles from stone

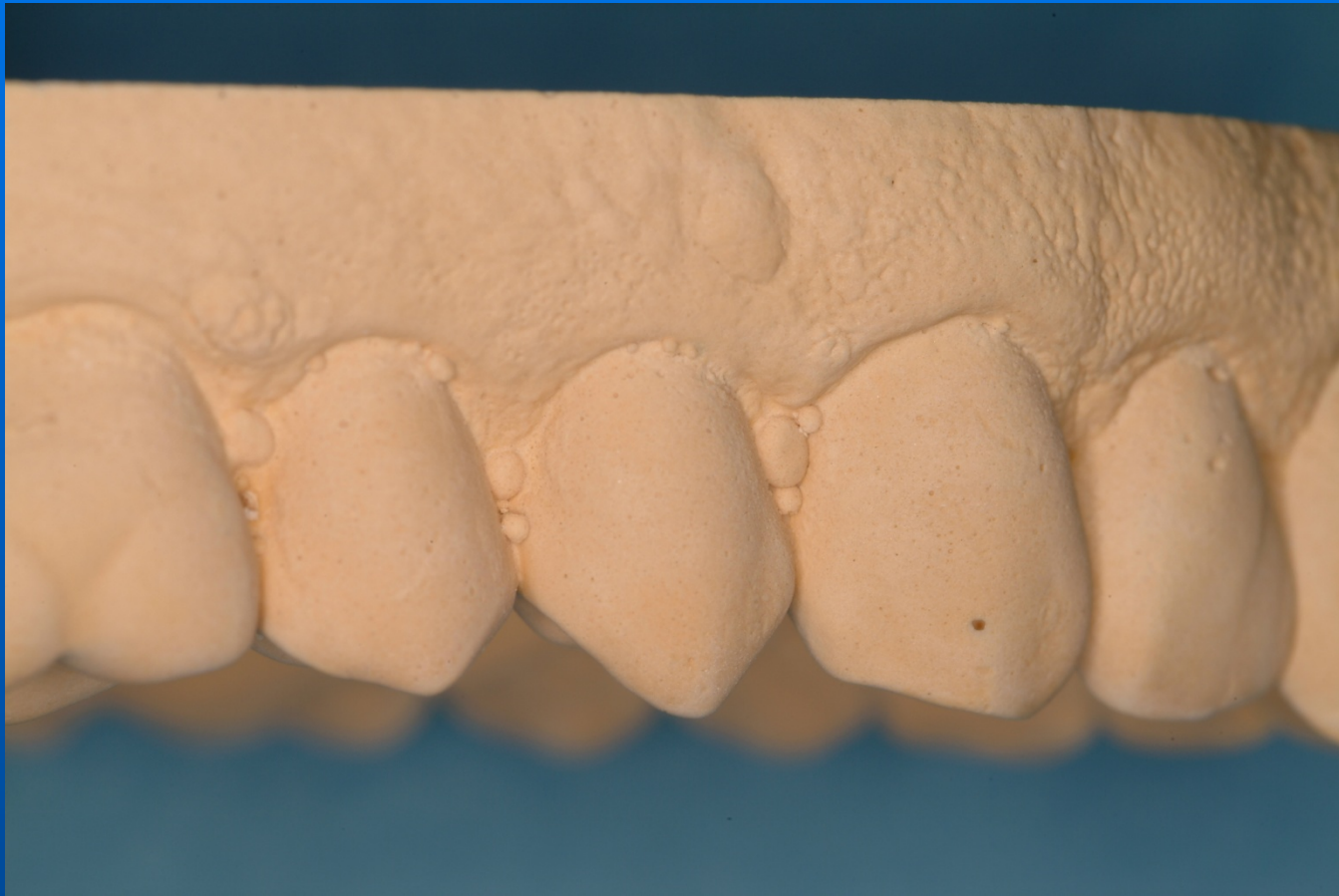
Area for impression



Place alginate on buccal and occlusal surfaces



Eliminates stone bubbles



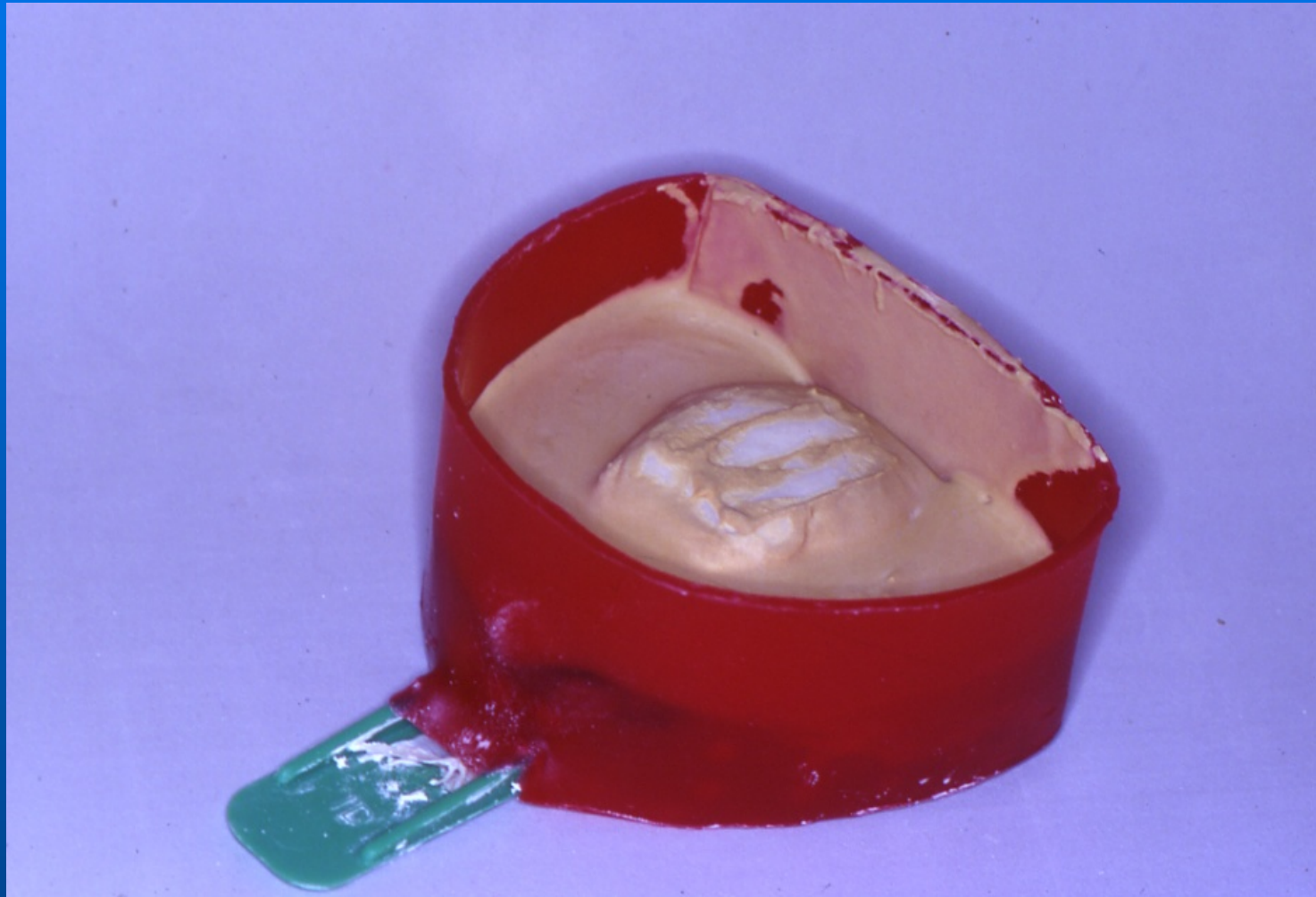
Use vacuum spatulator and vibrator



Reduces incomplete fills



Take impression and pour model



Remove stone bubbles



Reduce to 5 mm from cervical margin



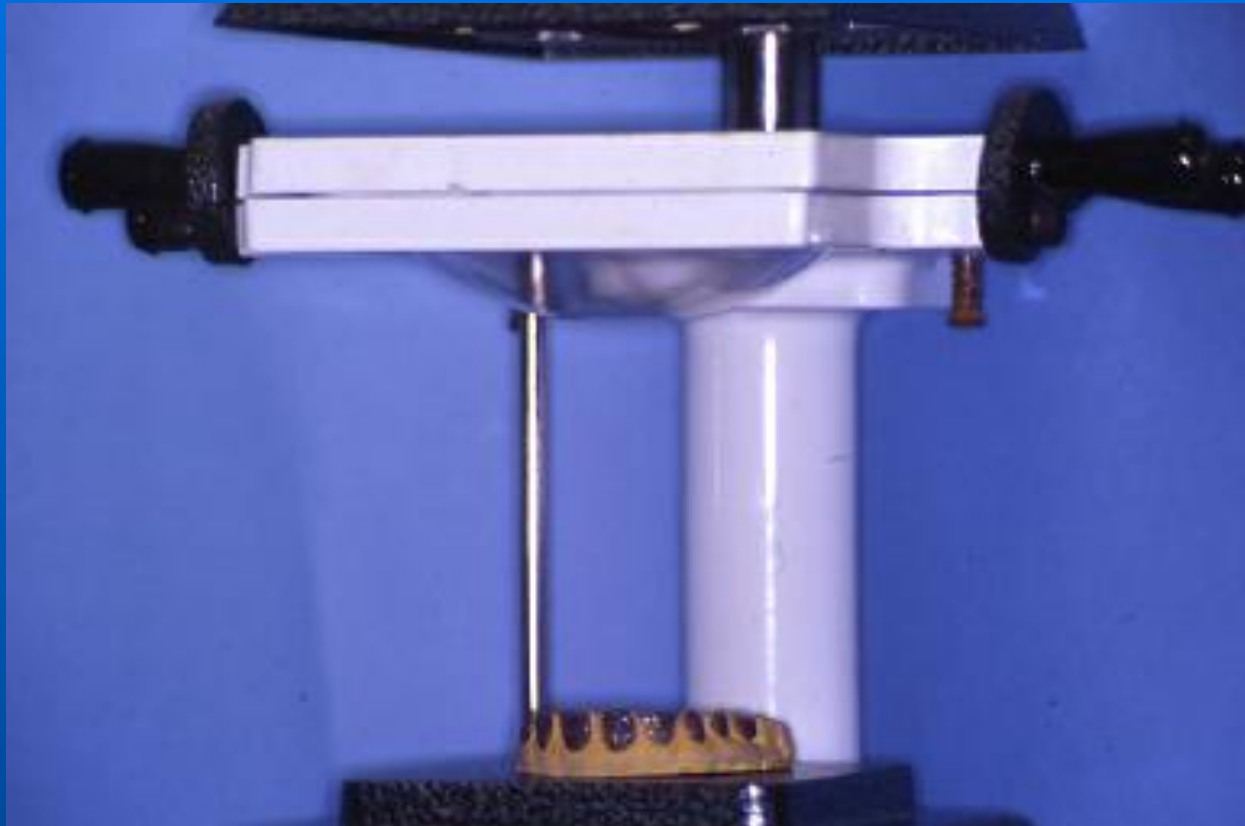
Fabricate a tray

- Place resin using palm method
- Keep one mm from M, D, C areas
- Vacuum form tray material
- Do gross and finer reduction
- Lift tray off model carefully
- Trim tray to cervical rainbow
- Reverse trim interproximally

Place resin using palm method



Vacuum form plastic sheet



Gross reduction on model



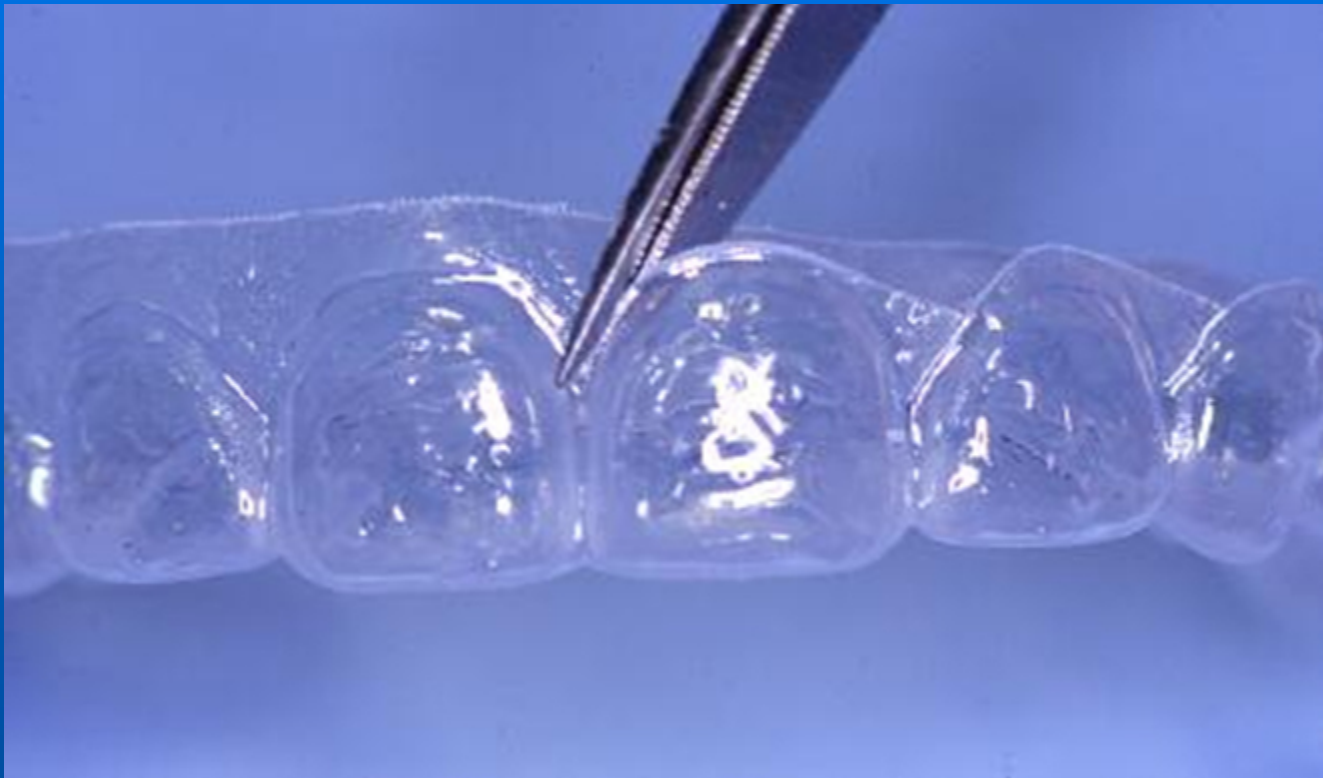
Finer reduction on model



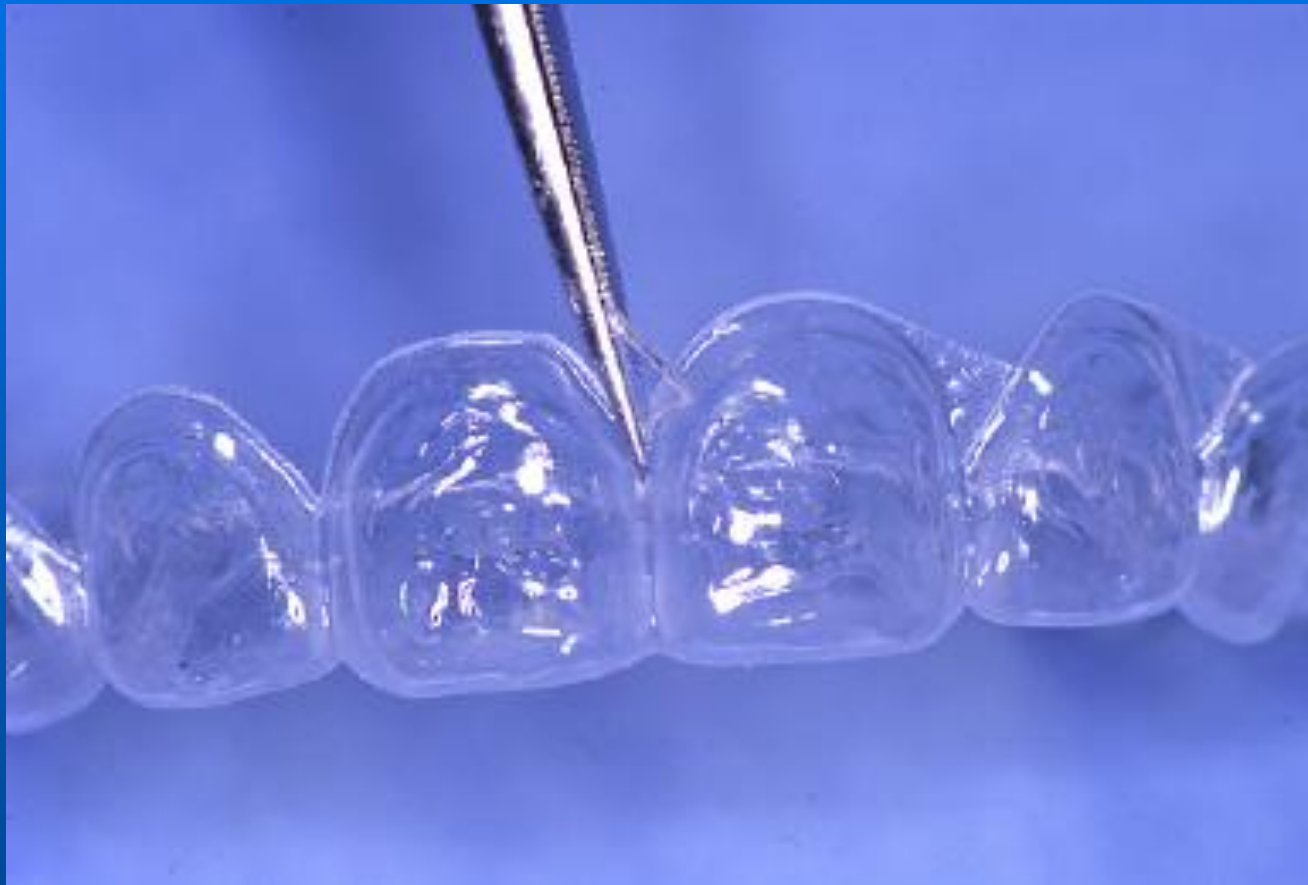
Lift tray off of model



Trim to cervical margin



Reverse directions on trimming



Go through Instructions at Delivery

I do half and they do the other half

Instructions For Use

Thoroughly brush teeth



Express agent into reservoirs



Seat tray and express excess



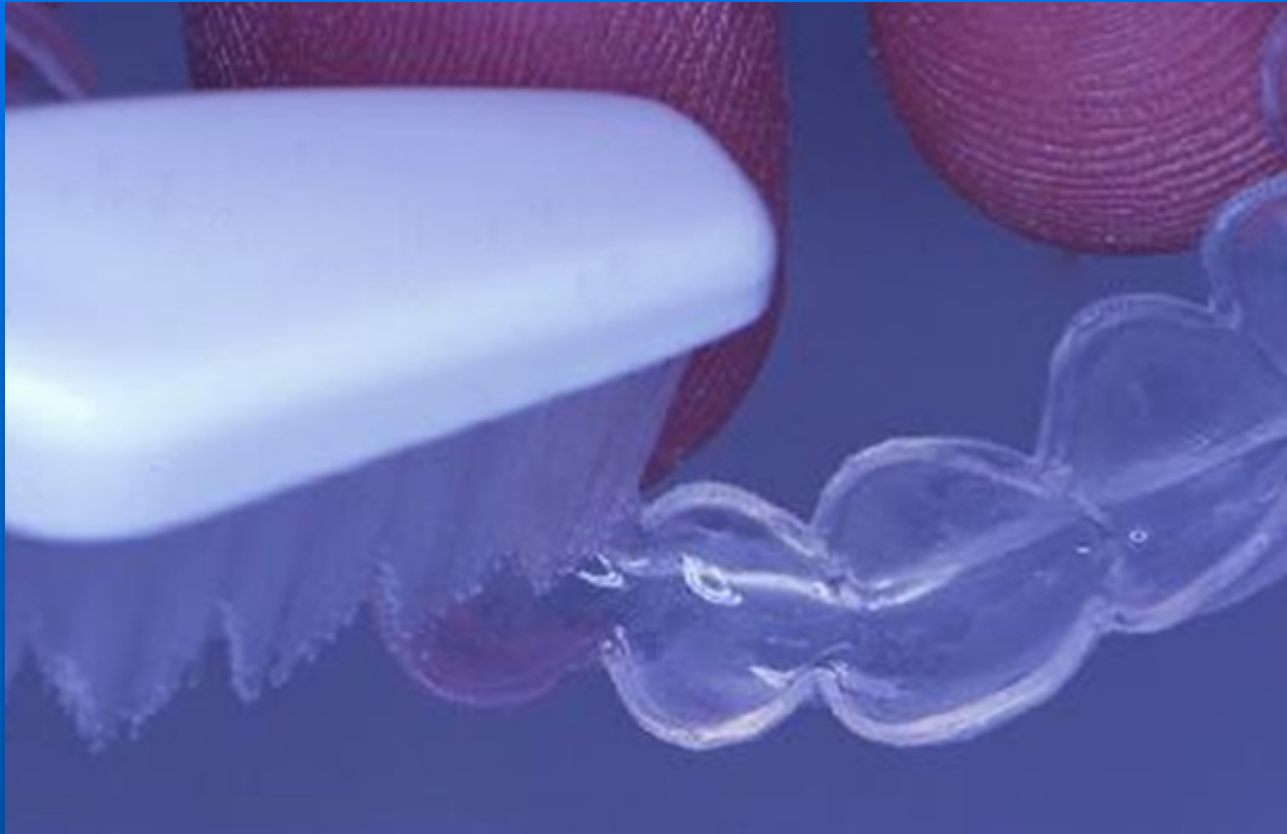
Brush off excess gel



Rinse twice with water



Remove residual gel



In addition to showing my patients how to use the product, I also give them a set of written instructions provided by the manufacturer.